

IM-2235 - MITSUBISHI - S16R PTAA2

1.500 R.P.M. | 50 Hz

TECHNICAL SPECIFICATIONS

Model:

IM-2235

Stand-by automatic gen set.



Image for guidance purposes.

ENGINE	MAKE	MODEL
	MITSUBISHI	S16R PTAA2
ALTERNATOR	MODEL	
	STAMFORD PI 734 F	

(400 / 230 V)

CONTINUOUS POWER:
(PRP "Prime Power" norma ISO 8528-1) **1970 kVA**

STAND-BY POWER:
(LTP "Limited Time Power" norma ISO 8528-1) **2220 kVA**

Amperes in the different voltages:

VOLTAGE	HZ	PHASE	COS Ø	PRP KVA/KW	LTP KVA/KW	AMPERAGE
415/240	50	3	0,8	1.968,0/1.574,4	2.221,2/1.777,0	3093,81
400/230	50	3	0,8	1.968,0/1.574,4	2.221,2/1.777,0	3209,83
380/220	50	3	0,8	1.968,0/1.574,4	2.221,2/1.777,0	3378,76
240/139	50	3	0,8	1.968,0/1.574,4	2.221,2/1.777,0	5349,71
230/133	50	3	0,8	1.968,0/1.574,4	2.221,2/1.777,0	5582,31
220/127	50	3	0,8	1.968,0/1.574,4	2.221,2/1.777,0	5836,05

ELECTRO EXIM SRL

ELECTRO EXIM SRL
21 Ialomicioarei St., sector 1, code 011277, BUCHAREST - ROMANIA
Phone: 0040 21 2231347 - 0040 744 755 390 - FAX: 0040 21 2231201
E-mail: office@electroexim.com - Web: www.electroexim.ro

IM-2235 - MITSUBISHI - S16R PTAA2

1.500 R.P.M. | 50 Hz

ENGINE CHARACTERISTICS

MAKE	MODEL
MITSUBISHI	S16R PTAA2

GENERAL DATA

Power PRP (kWm)	1640
Power LTP (kWm)	1851
No. cylinders	16
Cylinder capacity (L)	65.37
Diameter per stroke (mm)	170 x 180
Compression ratio	-
Cooling system	LIQUID
Injection	DIRECT
Suction	-
Series regulator	ELECTRONIC
Fly wheel coupling	-

Lubrication system

Oil capacity (L)	230.00
Oil consumption (%)	-
Min. alarm oil pressure (bar)	-

Ventilation system

Air cooling flow (m3/h)	150000
Combustion air flow (m3/h)	9540.00
Max. back pressure for fan (mbar)	0

Exhaust system

Exhaust gas flow (m3/h)	25200
Exhaust back pressure (mbar)	60
Temp. exhaust gases (°C)	-

Electrical system

VDC (V)	24
Battery (Ah)	3 x 180
Engine start-up (kW)	2 x 7,5

ELECTRO EXIM SRL

ELECTRO EXIM SRL
 21 Ialomicioarei St., sector 1, code 011277, BUCHAREST - ROMANIA
 Phone: 0040 21 2231347 - 0040 744 755 390 - FAX: 0040 21 2231201
 E-mail: office@electroexim.com - Web: www.electroexim.ro

IM-2235 - MITSUBISHI - S16R PTAA2

1.500 R.P.M. | 50 Hz

ALTERNATOR CHARACTERISTICS

MODEL

STAMFORD PI 734 F (400 / 230 V)

GENERAL DATA

Power PRP (kVA)	2080.00
Power LTP (kVA)	2288.00
Efficiency Alt. 3/4 %	96.70
Efficiency Alt. 4/4 %	96.00
No. Poles	4
Voltage regulator	MX321 AVR
No. wires	H
Insulation	2.73
Xd (%)	0.17
X'd (%)	0.12
X	
Degree of protection	IP

GENERATOR SET CONSUMPTION

% POWER USED	LITRES/HOUR
50%	205.00
75%	313
100%	435.00

DIMENSIONS, CAPACITIES, APPROXIMATE WEIGHT AND NOISE

LENGTH	DIMENSIONS (MM)	
	WIDTH	HEIGHT
12190	2430	2590
FUEL TANK (LITRES)		WEIGHT (KG)
1000.00		-
NOISE LEVEL (dB (A))		

IM-2235 - MITSUBISHI - S16R PTAA2

1.500 R.P.M. | 50 Hz

INMESOL GENERATOR SET

GENERAL DESCRIPTION

The "INMESOL" generator set is an electrical energy generating machine which is used in places where there **is no mains supply** or when there is a MAINS failure.

The mobile elements, distribution belt, fan, etc., and those parts which reach high temperatures during operation, exhaust manifold, etc, include their corresponding protections, in compliance with the requirements of the Machinery Directive **2006/42**.

REGULATIONS

The machine holds the "CE" marking, and the corresponding Declaration of Conformity is issued with each of them, in which it specifies that the machine complies with **R.D 842/2002 Low Voltage Regulations and with the European Directives:**

- 2006/42 on Safety in Machinery.
- 2006/95/CE on Electrical Safety.
- 2004/108/CE on Electromagnetic Compatibility.
- 2005/88/CE on NOISE EMISSIONS by equipment for outdoor use (for SOUNDPROOF GENERATOR SETS).

IM-2235 - MITSUBISHI - S16R PTAA2

1.500 R.P.M. | 50 Hz

HR HEAVY RANGE / SCOPE OF SUPPLY



Engine/alternator monobloc directly connected and installed via silent blocks on a frame made from high tensile electro welded steel profiles that are treated with degreasing liquids and aplicated with a phosphate coat and epoxi paint. Outdoor and anticorrosive special treatment.	✓	✓
Canopy of steel sheet sound proofed with fireproof rockwool, and treated with degreasing liquids and aplicated with a phosphate coat and epoxi paint. Outdoor and anticorrosive special treatment.	•	✓
Engine with mechanical engine driven pusher fan.	✓	✓
Residencial silencer with -35 db(A) noise reduction with exhaust tube and protection cap.	•	✓
Residencial silencer with -15 db(A) noise reduction and exhoust outlet pipe.	✓	•
Integrated lifting hook for single point lifting with crane.	•	✓
Integrated lifting hooks to be carried and moved.	✓	•
Radiator water filling register cover	•	✓
Easy cleaning register and radiator replacement.	•	✓
Metal fuel tank.	✓	✓
Drain and cleaning lid on fuel tank.	✓	✓
3 Valves fuel tank outside connection kit.	✓	✓
Quick socket fuel tank.	✓	✓
Security protection in warm parts	✓	✓
Oil extraction system placed in sump	✓	✓
External emergency stop push button.	✓	✓
Starting battery with security bornes and battery switch off.	✓	✓
Ground alternator with battery charger.	✓	✓
Autoexcited and autoregulated alternator.	✓	✓
Control panel to read electric measures, power, oil level,... /	✓	✓
Electrical digital control panel manual/automatic.	✓	✓
Circuit breaker, IV poles (automatic version).	✓	✓
Ground terminal.	✓	✓
Kit sockets (optional)	✓	✓
Inside auxiliary light (optional).	•	✓
Standard electronic speed governor on engines.	✓	✓
No drip security bucket.	✓	✓

IM-2235 - MITSUBISHI - S16R PTAA2

1.500 R.P.M. | 50 Hz

DSE 7320 AUTOMATIC CONTROL PANEL

DSE 7320 AUTOMATIC CONTROL PANEL

PROTECTION, DISTRIBUTION AND AUTOMATIC CONTROL panel which starts the generator set when it detects a mains failure and stops it when the mains is restored with the control unit DSE 7320.



Image for guidance purposes.

It has the following:

- 1** EMERGENCY STOP PUSHBUTTON
- 2** PROTECTIONS:
 - Magnetothermal switch (preheating resist.) 2P (16 A)
 - Protection fuses for control module
- 3** BATTERY CHARGER

IM-2235 - MITSUBISHI - S16R PTAA2

1.500 R.P.M. | 50 Hz

DSE 7320 AUTOMATIC CONTROL PANEL

4 DSE 7320 CONTROL and PROTECTION CENTRE. It has a digital LCD screen, which provides easy reading of the information regarding the ENGINE, ALTERNATOR, MAINS and CHARGING.

READINGS that can be made:

ENGINE:

- Coolant temperature
- Oil pressure
- Turning speed (rpm)
- Fuel level
- Battery voltage
- Battery alternator voltage.
- Operating hours
- Number of start-ups

ALTERNATOR AND CHARGE:

- Voltages between phases and between phases and neutral.
- Intensities
- Frequency
- Active Power (kW)
- Reactive Power (kVAr)
- Apparent Power (kVA)
- Cos phi
- Active energy meter (kW-h)

MAINS:

- Frequency
- Phase rotation order
- Voltages between phases and neutral (L1-N, L2-N, L3-N).
- Voltages between phases and (L1-L2, L2-L3, L1-L3).
- Earth current

CONTROL of the set:

- STARTS and STOPS the set AUTOMATICALLY when mains failure is detected and when it is restored, respectively.
- It can also operate MANUALLY

Protection of the engine and alternator, with the ALARMS activated:

ENGINE:

- Low oil pressure
- High coolant temperature
- Low and High battery Voltage.
- Failure of the alternator to charge batteries
- Low fuel level

IM-2235 - MITSUBISHI - S16R PTAA2

1.500 R.P.M. | 50 Hz

DSE 7320 AUTOMATIC CONTROL PANEL

ALTERNATOR:

- Low and High Voltage
- Low and High Frequency
- Overload due to Intensity (A)
- Short-circuit
- Negative Phase Sequence.
- Power Overload (KW-kVA)
- Load control:
 - 1.Connection and disconnection of artificial loads.
 - 2.Disconnection of non-essential loads

MAINS:

- Low and High Voltage
- Low and High Frequency

OTHER CHARACTERISTICS:

- The real-time clock provides an exact record of events.
- Extensive number of configurable inputs and outputs.
- Configurable alarms and timers.
- USB connectivity
- Fully configurable via software and PC.
- Modbus RTU
- Possibility of SMS text messages
- Communications Ethernet, RS 232 and RS 485
- Programmer Clock with multiple maintenance events which can be configured for the optimal operation of the engine. Weekly and/ or monthly programming of up to 16 starts and stops per week.
- ALTERNATIVE CONFIGURATIONS, which open up the working possibilities

5 DISTRIBUTION:

- Direct output of the magnetothermal switch.

6 OPTIONAL:

- 4-Pole Switchboard installed next to the Automatic Panel
- 4-Pole Switchboard in metal cabinet independent from the Automatic Panel

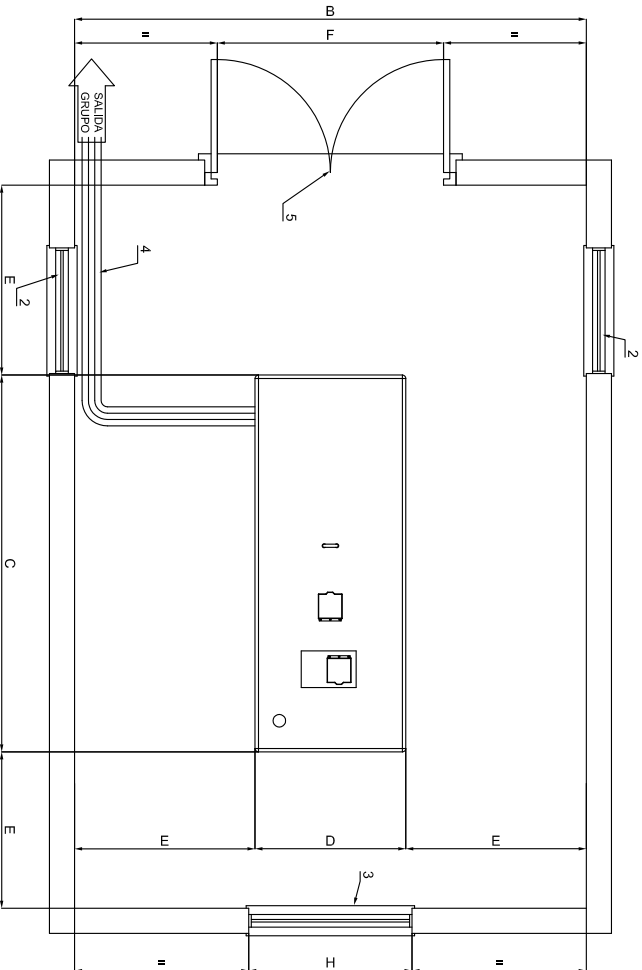
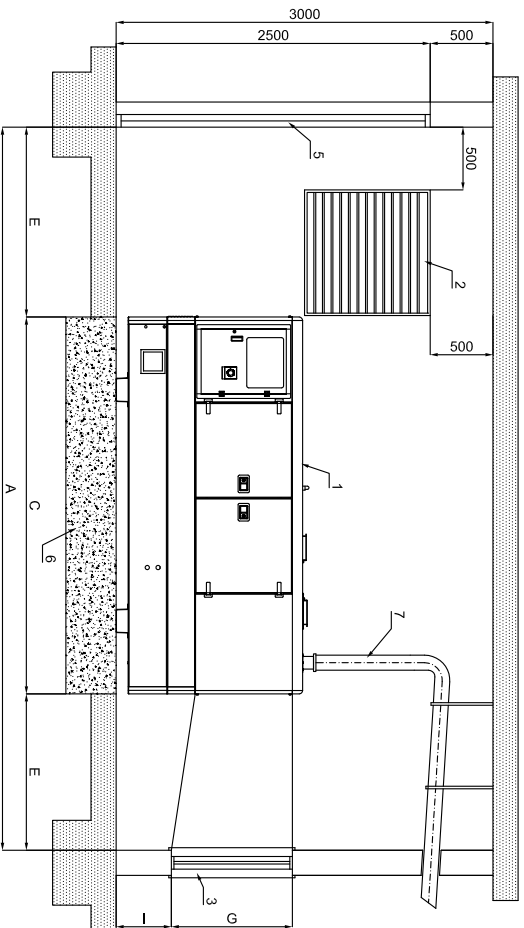
IM-2235 - MITSUBISHI - S16R PTAA2

1.500 R.P.M. | 50 Hz

DSE 7320 AUTOMATIC CONTROL PANEL

The following table shows the different amperages of the magnetothermal switches and the switchboards according to the set's power - Three-phase generators (single phase by request):

	CONT. POW	MAGNETOTHERMAL PROTECTION IV POLES (A)	SWITCHBOARD IV POLES (A)
SET'S POWER	250 - 275 kVA	400	400
	300 - 430 kVA	630	630
	450 - 500 kVA	800	800
	570 - 650 kVA	1000	1250
	780 - 800 kVA	1250	1250
	915 - 1100 kVA	1600	1650
	1150 - 1300 kVA	2000	2000
	1400 - 1750 kVA	2500	2500
	1800 - 2100 kVA	3200	3200



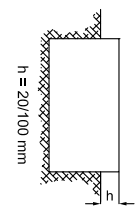
DIMENSIONES MINIMAS DE SALA SEGUN POTENCIA											
POTENCIA (Kva)	A	B	C	D	E	F	G	H	I	PESO	SECCION HUECO ENTRADA AIRE
8-15 ABATIBLE	3365	2800	1365	800	1000	900	700	850	450		2x0,50 m ²
10-15	3600	2900	1600	900	1000	1100	700	850	450		2x0,50 m ²
20-30	4000	2950	2000	950	1000	1200	750	850	450		2x0,50 m ²
40-60-75	4500	3100	2500	1100	1000	1400	900	1100	450		2x0,90 m ²
85-105-130	5000	3200	3000	1200	1000	1400	900	1100	450		2x1,00 m ²
150-180-200-250	5600	3350	3600	1350	1000	1550	1150	1300	500		2x2,50 m ²
300-400	6200	3600	4200	1600	1000	1800	1250	1600	650		2x3,00 m ²
450-470-500-510-600-650	6800	4000	4800	2000	1000	2200	1300	1800	725		2x3,50 m ²

- NOMENCLATURA
- 1.- GRUPO ELECTROGENO
 - 2.- HUECO ENTRADA DEL AIRE
 - 3.- TUNEL EXPULSION DEL AIRE
 - 4.- BANDEJA PASACABLES
 - 5.- PUERTA DE ACCESO
 - 6.- BASE HORMIGON ARMADO H-175
 - 7.- TUBO DE ESCAPE

CALCULO ESPESOR LOSA DE HORMIGON

$$E = \frac{W}{d \times D \times C}$$

E = altura bloque de hormigon
 W = peso total grupo electrogeno (2400 kg/m³)
 d = anchura bloque de hormigon (m)
 C = longitud bloque de hormigon (m)



EL Ø DE LA TUBERIA DE EXTENSION DEL ESCAPE PUEDE SER EL MISMO QUE EL DEL SILENCIADOR HASTA 5 m. PARA DISTANCAS MAYORES DE 5 m. DEBE AUMENTARSE EL Ø DE LA TUBERIA 10 mm POR CADA 10 m MAS DE DISTANCIA ENTRE EL GRUPO ELECTROGENO Y LA SALIDA EXTERIOR

	PROYECTO: GRUPO INSONORIZADO											
	<p>Una declaración de cumplimiento de la presente es válida para el sistema de escape de aire acondicionado que se ha diseñado y fabricado en el taller de producción de la empresa NIMESOL S.L. con la conformidad que se indica en el presente documento.</p>											
	CODIGO	FECHO	ESCALA	MODIFICADO	AGUILAR	02-FEB-2015	MATERIAL					
			DIBUJADO	J.G.BELAR	27-FEB-2008	TOLENCIA GENERAL						
			COMPROBADO	J.L.SOLANO	04-02-2012	UDS.						
			DENOMINACION:	GRUPO INSONORIZADO								
			DIMENSIONES DE SALA									
			EXPEDIENTE:									
			Nº PLANO									
			MARCA									